

Declarative Shadow DOM

and the future of Drupal Theming

Sept 25, 2025

John Albin Wilkins

Drupal & React Frontend Developer



Warning:

**This presentation is highly
speculative**



Who is JohnAlbin?

- Web developer since 1993
- Drupal dev since 2004
- Drupal core dev since 2006
- MAINTAINERS.txt since 2010
- 70+ presentations and keynotes in 4 continents
- Lives in Taiwan; moving to California?



Why now?



This is my **2nd**
web components presentation.

The first was in **2014**.





Baseline



Limited availability



Newly available

August 5, 2024



Widely available

February 5, 2027

Everything Old is *new*

Old School:

PHP server-side renders

New School:

React.js' new Server Components
and Client Components



Split components

1. **Server part**
(with no client-side JavaScript)
2. **Client part**
(with client-side JavaScript)



Split components (2023)



React.js

Web Components

Server Components

no solution

Client Components

vanilla JavaScript



Split components (2024)



React.js

Web Components

Server Components

vanilla HTML w/
Declarative Shadow DOM

Client Components

vanilla JavaScript



Web components

95% working LIVE DEMO!

1. Templates
2. Custom elements
3. Shadow DOM



customElements.define()



means no more

**Drupal.behaviors or
Drupal.once()**



Shadow DOM components

1. Templates
2. Custom elements
3. Shadow DOM



Light DOM components

1. ~~Templates~~
2. Custom elements
3. ~~Shadow DOM~~





Split components

Shadow DOM Components

vanilla HTML w/
Declarative Shadow DOM

vanilla JavaScript

Light DOM Components

vanilla HTML w/
custom elements only

vanilla JavaScript
w/ `customElements.define()`





Single Directory Web Components

using

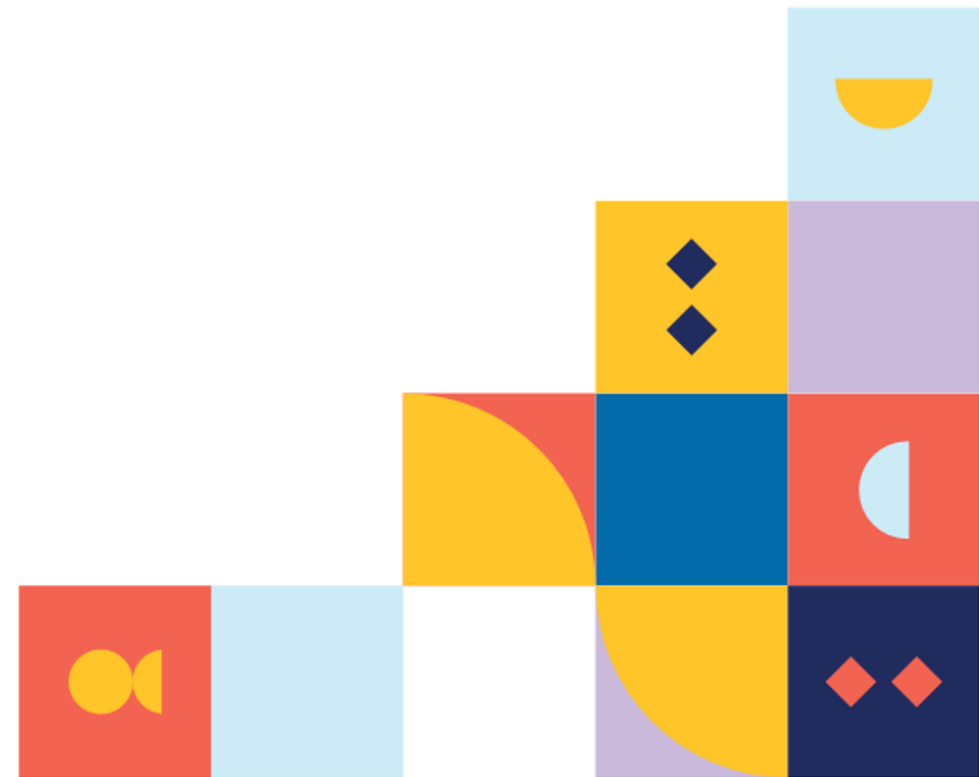
Light DOM Web Components

or

**Declarative Shadow DOM
Components**



THANK YOU!



QUESTIONS?

Drupal: JohnAlbin
john@albin.net

